

EJ-D100AE/BE/CE/PE Dry cabinet

1. The main technical parameters:

Model	EJ-D100A/AE	EJ-D100B/BE	EJ-D100C/CE	EJ-D100P/PE
Humidity control range	20%~60% RH adjustable	10%~20% RH adjustable	1%~10% RH adjustable	1~3% RH adjustable
Average power	5W	6W	8W	8W
Maximum power	80W	90W	130W	170W
Material	Cold rolled steel plate			
Inner size	W446 * D372 * H598mm			
Outer size	W448 * D400 * H688mm			
Shelf quantity	1pcs			
Shelf load	50kg			
FCL load	200kg			
Power supply	110V/220V 50/60HZ			
N.W./G.W.	20kg/28kg			
Meas.	54*48*85cm/0.22CBM			
Note	E means ESD; ESD color: black (Standard supply is ESD); NON-ESD (White)			

2. Applications:

It can be used for storage of ICs, BGAs, precision electronic components, special chemicals, semiconductor devices, optical electronic devices, printed circuit boards, optical films and lenses, precision instruments and meters.

3. Product Features:

- 1) The humidity display range is 0%~99% RH, and the temperature display range is -9 °C~99 °C; LED Segment displays; Display accuracy: humidity $\pm 3\%$ RH; temperature ± 1 °C;
- 2) The cabinet and the shelves are made of 1.2mm high-quality steel plates; The door is inlaid with 3.2mm high-strength tempered glass; Magnetic sealing strip is used for sealing; Movable casters with brake are easy for movement and fixing;
- 3) The surface treatment of anti-static type adopts electrostatic powder spraying, and the surface resistance value is $10^6 \sim 10^8 \Omega$;
- 4) The upgraded dehumidifying unit is more energy-saving;
- 5) The shell of dehumidifying unit is made of high temperature flame retardant material;
- 6) It has the functions of fault prompt, panel dormancy, power-off memory and calibration setting;
- 7)The products passed CE, RoHS and C-Tick certificates;



Options for customer's special demands:

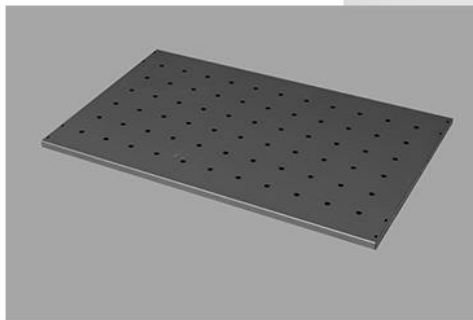
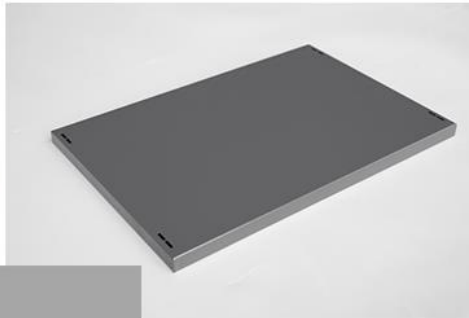
1. Stainless steel cabinet;
2. Heating system up to 40°C;
3. Alarm system with indicator light; Buzzer alarm system;
4. Data logging system by USB connection with computer for data reading and printing;
5. N2 dehumidification function to achieve fast dehumidification effect (except 100L);

Digital display and control panel



Handle lock

Clapboard
(100L, 160L, 255L)



Clapboard with holes
(320L, 435L, 540L, 720L,
875L, 1440L)

Dehumidifying unit



Universal wheels



Application scope and storage reference of dry cabinet:

Relative Humidity	Suitable storage of items
60%~50%	Paintings, antiques, paper money, ancient books, fax paper, copy paper
50%~40%	Cameras, video cameras, lenses, microscopes, endoscopes, binoculars, magnetic tape, disks, records, film, photographic film, musical instruments, stamps, furs, medicinal materials, tea, coffee, cigarette and etc.
40%~20%	Precision hardware molds, measurement instruments, all electronic parts, PC boards, metallic powders, semiconductors, medical supplies and etc.
20% or less	Sample, standard measuring tools, seeds, pollen, seedlings etc.
10%~20%	Electronic Components, IC, BGA and etc.
10% or less	Particularly sensitive to humidity of materials, such as IC, BGA and etc. with higher humidity requirements

Products of the same category – Dry cabinet

Instructions about the models:

- A: Humidity range: 20%~60% RH adjustable
- B: Humidity range: 10%~20% RH adjustable
- C: Humidity range: 1%~10% RH adjustable
- P: Humidity range: 1~3% RH adjustable
- E: E means ESD

Model	ESD Model	Volume	Inner size (W*D*H) mm	Outer size (W*D*H) mm
EJ-D100A/B/C/P	EJ-D100AE/BE/CE/PE	100L	446*372*598	448*400*688
EJ-D160A/B/C/P	EJ-D160AE/BE/CE/PE	160L	446*422*848	448*450*1010
EJ-D255A/B/C/P	EJ-D255AE/BE/CE/PE	255L	596*372*1148	598*400*1310
EJ-D320A/B/C/P	EJ-D320AE/BE/CE/PE	320L	898*422*848	900*450*1010
EJ-D435A/B/C/P	EJ-D435AE/BE/CE/PE	435L	898*572*848	900*600*1010
EJ-D540A/B/C/P	EJ-D540AE/BE/CE/PE	540L	596*682*1298	598*710*1465
EJ-D720A/B/C/P	EJ-D720AE/BE/CE/PE	720L	596*682*1723	598*710*1910
EJ-D875A/B/C/P	EJ-D875AE/BE/CE/PE	875L	898*572*1698	900*600*1890
EJ-D1440A/B/C/P-4	EJ-D1440AE/BE/CE/PE-4	1440L	1198*682*1723	1200*710*1910
EJ-D1440A/B/C/P-6	EJ-D1440AE/BE/CE/PE-6	1440L	1198*682*1723	1200*710*1910

Related certificates



For more details, please visit our website: <http://www.dry-cabinet.cn>